



IFI & MORGAN LTD. RMB FASTENERS LTD. ifiTeam Material Solutions Ltd.

www.ifiteam.com

WHAT WE OFFER

IFITEAM offers professional fasteners services, including a diverse range of products, product knowledge, production know-how, quality control & logistics.

WHY US?

Manufacturing



Offer a variety of products manufactured by our own invested factories and sub-makers.

Value Added Services



Provide a wide selection of value-added services for our quality-oriented customers.

Technical Capabilities



Support our customers' technical requirements with our strong industrial knowledge and experiences.

Customer Solutions



Put in extra efforts to work out comprehensive solutions to meet customers needs.

Address

Headquarters - Main Sales Office

Unit 2D, Centre Mark II, 305-313 Queen's Road Central, Hong Kong

ifiTeam Material Solutions Limited (Haiyan, China)

Building One, No.12, Haisheng Road, Wuyuan Development Zone
Fasteners Industrial Plot, Wuyuan Town, Haiyan, Zhejiang, China
Zip Code: 314300

Phone

Headquarters (852) 2542 3366
(886-7) 621-5588
Taiwan
(82) 1072378018
Korea
India (91) 9941168888

E-mail

all@ifiteam.com

Website

www.ifiteam.com



IFI & MORGAN LTD.
RMB FASTENERS LTD.
ifiTeam Material Solutions Ltd.

ABOUT IFITEAM

ESTABLISHED SINCE THE 1970'S

1976



IFI & Morgan Ltd. originated its fasteners professional services in Kaohsiung Taiwan, Morgan's hometown.

1988



IFI & Morgan Ltd. was anchored in Hong Kong, to serve overseas fasteners importers.

2006



RMB Fasteners Ltd., the sister company of IFI & Morgan Ltd. was established to honor Barbara's dedication.

2017



ifiTeam Material Solutions Ltd. was set up in Haiyan Zhejiang, to provide additional value-added services.

2023



IFITEAM expanded with grounded staff in Korea and India, continues to provide professional fasteners service to serve our customers.



OUR VISION

Be the Elite Team and Role Model in Fasteners Industry.

FOUNDER'S PHILOSOPHY

- Compassion
- Integrity
- Dedication
- Simplicity
- Excellence

OUR MISSION

- Provide customers with outstanding service
- Assist suppliers in continuous development
- Seek WIN-WIN situations

OUR VALUES

- Honesty
- Responsibility
- Cooperation
- Innovation

OUR ACTION GUIDELINES

- Pursue Excellence
- Enjoy Work
- Take Initiative
- Adapt to Changes
- Foster Teamwork
- Respect Differences



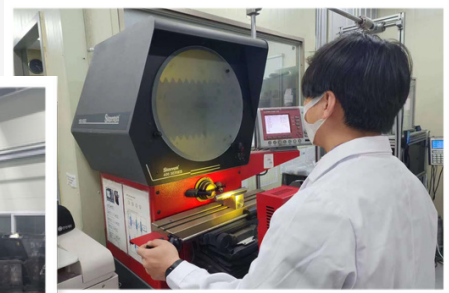


IFI & MORGAN LTD.
RMB FASTENERS LTD.
ifiTeam Material Solutions Ltd.

MANUFACTURING



PRODUCTION SITE



MADE-IN-KOREA
B7 STUDS



LOW CARBON T-ROD
FROM INDIA

MANAGED AND TESTED
BY IFITEAM



CHINA . TAIWAN . KOREA . INDIA

VALUE ADDED SERVICES

ifiTeam Material Solutions Ltd. (Haiyan, China)



QUALITY CONTROL SYSTEM LAB AND TESTING SERVICES

IFITEAM Q.C. squad performs independent tests at our in-house IFITEAM Lab.



SPECIAL COATING SECONDARY PROCESS

IFITEAM has a wide base of sub-contractors to provide extensive processes.



KITTING / PACKAGING / ASSEMBLY

IFITEAM offers comprehensive packaging, kitting and assembly services.



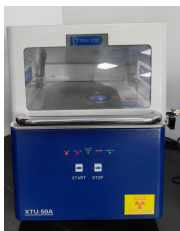
WAREHOUSING

IFITEAM has warehouse facilities to serve customized inventory programs.

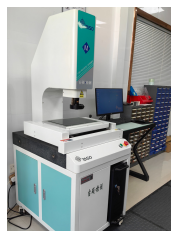
IFITEAM QC SQUAD & IN-HOUSE LAB



TESTING & VERIFICATION



**X-RAY PLATING
THICKNESS TESTER**



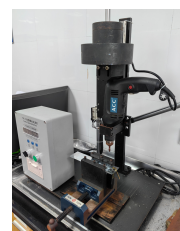
**FULL-AUTOMATIC
IMAGE MEASUREMENT
INSTRUMENT**



SALT SPRAY TESTER



**TENSILE STRENGTH
TESTER**



TAPPING SPEED TESTER



**DIGITAL ROCKWELL
HARDNESS TESTER**



**DIGITAL VICKERS
HARDNESS TESTER**



TORQUE BRACKET



CONCENTRICITY TESTER



TORQUE WRENCH



**HEAD THICKNESS
GAUGE**

KITTING & PACKAGING



COMPARTMENT BOX



JAR PACKING



CLAMSHELL BOX



CARDBOARD BOX



PLASTIC BAG



KITTING



ASSEMBLED PARTS



**CUSTOMIZED PACKAGING LAYOUT AND LABEL ARE AVAILABLE.



SPECIAL COATING & SECONDARY PROCESS

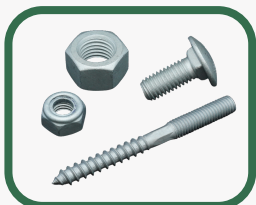
**WELDING
BENDING
DRILLING HOLES**



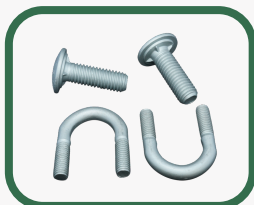
BLACK ZINC



DACROMET



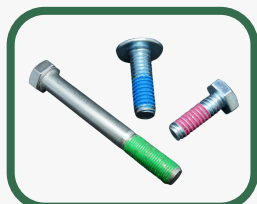
GEOMET



RUSPERT



NYLON PATCH



GREEN ZINC



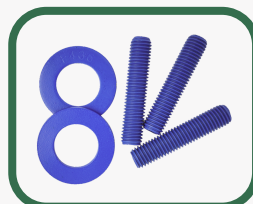
BRASS COATING



MAGNI



XYLAN



WAREHOUSING





IFI & MORGAN LTD.
RMB FASTENERS LTD.
ifiTeam Material Solutions Ltd.

TECHNICAL CAPABILITIES



Provide professional advice and improvement solutions based on actual application of the product.



Non-standard or customized product development according to product print or sample.



Ability to create AutoCAD print and new tooling based on customer's requirements.

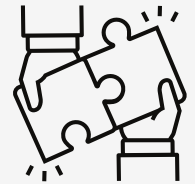


Ability to provide PPAP documents.

CUSTOMER SOLUTIONS



A DREAM TEAM AT YOUR SERVICE



Our directors have educated a team full of enthusiasm and technical knowledge to serve overseas fasteners importers, the IFITEAM.

IFITEAM QC squad performs quality control on production sites, and independent tests at our in-house IFITEAM Lab. We secure extra assurance to our customers for their peace of mind.

ifiTeam Material Solutions Ltd. (China branch) located at Haiyan Zhejiang, provides additional value-added services and comprehensive solutions for industry supply.

“

IFITEAM is here to serve you with our professional best!
We consider customers' needs and make efforts to serve truthfully.



Barbara Chen
Managing Director
Vice President, Sales

INITIATIVE . FAITH . INNOVATION

PRODUCTS

FULL-LINE

ASTM/ ASME/ SAE standard products

METRIC PRODUCTS

DIN/ ISO standard are available

MATERIAL

Carbon Steel, Alloy Steel, Stainless Steel, Brass, Copper, Bronze, Aluminum, Cast Iron, Powder Metallurgy

SURFACE TREATMENT

Plain, Zinc Clear, Zinc Yellow CR3+, HDG, Black Zinc, Phosphate Oil, JS500, Teflon, Xylan, Dacromet, Ruspert, Magni, Nylon Patched etc.

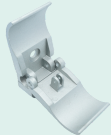
SPECIAL PARTS



Stamping Parts



Truck & Trailer Components



Casting Parts



Precision Parts



Special Parts

COMMERCIAL FASTENERS



Threaded Studs



Washers



Bolts



Nuts



Screws

SPECIAL PARTS

STAMPING PARTS

- SPECIAL STAMPING PARTS ASSEMBLY
- CUSTOMIZED PER PRINTS OR SAMPLES



CASTING PARTS

- ZINC DIE CAST, MALLEABLE, DUCTILE IRON AND GREY IRON ETC.



TRUCK & TRAILER COMPONENTS

- EQUALIZER BOLTS & NUTS
- WHEEL BOLTS / STUDS / NUTS
- 2-PC WHEEL NUTS
- INNER & OUTER NUTS



VALVES & PIPE FITTINGS

- BALL VALVES / SCREWED FITTINGS
- BUTT-WELDED FITTINGS / FORGED FITTINGS
- FLANGES AND PIPES



HIGH QUALITY PRECISION PARTS

- MACHINED PARTS
- TURNED PRECISION PARTS
- IN CARBON STEEL, ALLOY STEEL, STAINLESS STEEL, BRASS, ALUMINUM, ETC.
- CUSTOMIZED PER CUSTOMER'S PRINTS



HOT FORMED SPECIAL PARTS

ANCHOR NUT | DOMED NUT | SEAL NUT | U HANGER NUT
COUPLER | STEEL CONE | BLADE BOLT | SPECIAL WASHER
DOME BALL WASHER | DYNAMIC ROCK BOLT | WEDGE PLATE
REINFORCEMENT ANCHOR | DOME BARREL & WEDGE



HIGH QUALITY STAINLESS STEEL PARTS

STANDARD & CUSTOMIZED SERIES

- MATERIAL: 304 316 316L 310S ETC.
- SIZE: M5-M20, 3/16"-3/4"
- LENGTH: 10MM-200MM, 3/8"-8"



SELF-TAPPING SERIES



T-TYPE SERIES



FLANGE SERIES



DOUBLE END SERIES



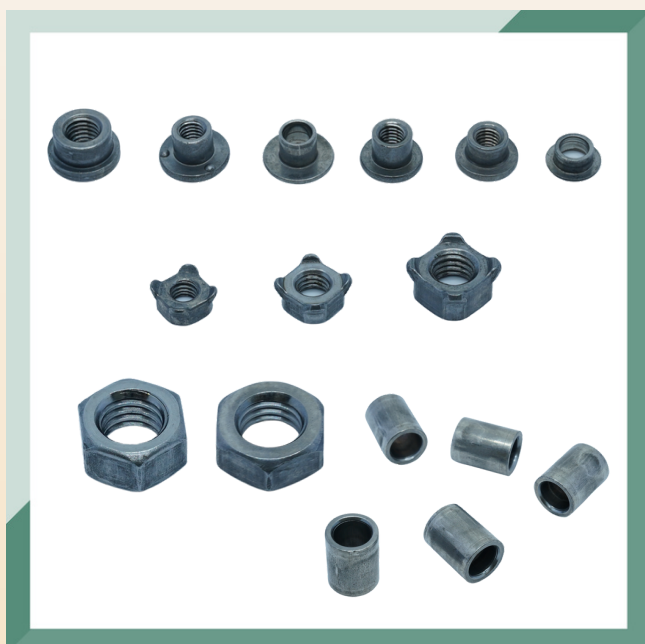
FANCY GROOVE SERIES



TURNING SERIES



AUTOMOBILE PARTS



HARDWARE & TOOLS

- SOCKET
- MASTER TOOL SET
- ACCESSORIES



PARTNER MAKER
IN VIETNAM

COMMERCIAL FASTENERS

B7 & LOW CARBON THREADED STUDS

For USA Market

- PARTNER MAKER IN KOREA (B7)
- PARTNER MAKER IN INDIA (Low Carbon)
>>> Managed & tested by IFITEAM

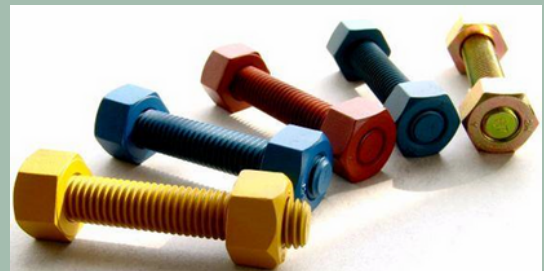
For other countries

- OWN FACTORY IN CHINA

- B7 FULLY THREADED RODS
- B7 FULLY THREADED STUDS
(WITH OR WITHOUT NUTS)
- DOUBLE ENDED STUDS
- LOW CARBON THREADED RODS / STUDS

FINISH:

PLAIN, ZINC YELLOW, ZINC PLATED, HDG,
TEFLON, XYLAN, ETC.



WASHERS FAMILY

**MATERIAL: CARBON STEEL, STAINLESS STEEL,
BRASS, ALUMINUM, ETC.**

- USS, SAE, FENDER WASHER
- F436 & HARDENED WASHER
- ROUND, SQ, RECTANGULAR PLATE WASHER
- F436 BEVEL HARDENED WASHER
- MALLEABLE IRON WASHER
- HILLSIDE, CLIPPED WASHER
- OGEE, DOCK WASHER
- MEDIUM, HEAVY SPLIT LOCK WASHER



COMPREHENSIVE BOLTS SUPPLY

- 307A, GR 2, GR 5, GR 8 HEX BOLT / CAP SCREW
- 307B, A325, A490, B7 HEAVY HEX BOLT
- 307A, GR 5, GR 8 CARRIAGE BOLT / PLOW BOLT
- SQ HEAD MACHINE BOLT
- HEX LAG SCREW
- GR 2, GR 5, GR 8 HEX FLANGE BOLT
- DOME HEAD TIMBER BOLT
- T-HEAD BOLT / STEP BOLT
- TRACK BOLT
- TOGGLE BOLT
- VARIOUS BENT BOLTS - FOUNDATION BOLT
- L-SHAPE ANCHOR BOLT WITH NUTS & WASHERS
- ROUND, SQ BENT U-BOLT / J-BOLTS / V-BOLTS
- S-HOOK, J-HOOK
- OPEN OR WELDED EYE BOLT
- ACOUSTICAL LAG SCREW



COMPLETE NUTS FAMILY

IN COLD FORMED & HOT FORMED

- GR 2, GR 5, GR 8
FINISHED HEX / FINISHED HEX JAM NUT
HEAVY HEX / HEAVY HEX JAM NUT
- 2H, DH, GRADE C HEAVY HEX NUT
- GR 5 HEX FLANGE NUT (SOFT / CASE HARDENED)
- HEX / SQ MACHINE SCREW NUT
- HEX COUPLING NUT
- SLOTTED NUTS
 >> FINISHED / FINISHED JAM / HEAVY
- NYLON INSERT LOCKNUT
 >> TYPE NE / NTE / NTU / NU / NM
- ALL METAL LOCKNUT
- COIL / ACME NUT
- BENT STAMPING PART / TOGGLE WING
- COLD FORGED / STAMPED WING NUT
- 3 & 4 PRONG TEE NUT

FULL RANGE SMALL SCREWS

FULL RANGE IN ALL KINDS HEAD STYLE OR POINT

Head:

- Flat, Pan, Round, IH, IHW, Truss, Oval, Binder etc.

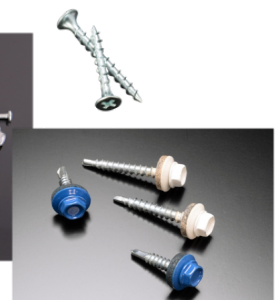


Drive:

- Slotted, Unslotted, Phillips, Combo, 6-lobe etc.



- MACHINE SCREWS | WOOD SCREWS
- SELF DRILLING SCREWS | SHEET METAL SCREWS
- CONCRETE SCREWS | K-LATH SCREWS
- SEMS SCREWS WITH PAINTED HEAD
- DECK / CHIPBOARD SCREWS
- THREAD FORMING SCREWS | THREAD ROLLING SCREWS



PROFESSIONAL EXPANSION PRODUCTS

- WEDGE ANCHOR | DROP-IN ANCHOR
- SLEEVE ANCHOR | LAG SCREW SHIELD
- MACHINE SCREW ANCHOR
- EXPANSION SHIELD
- LEAD WOOD SCREW | HAMMER DRIVE
- HOLLOW WALL ETC.



Address

Headquarters - Main Sales Office

Unit 2D, Centre Mark II, 305-313 Queen's Road Central, Hong Kong

ifiTeam Material Solutions Limited (Haiyan, China)

Building One, No.12, Haisheng Road, Wuyuan Development Zone
Fasteners Industrial Plot, Wuyuan Town, Haiyan, Zhejiang, China
Zip Code: 314300



Phone

Headquarters (852) 2542 3366
Taiwan (886-7) 621-5588
Korea (82) 1072378018
India (91) 9941168888



E-mail

all@ifiteam.com



Website

www.ifiteam.com